



LINEA CITTÀ

AUTOMATIC URBAN TOILET

TWIN

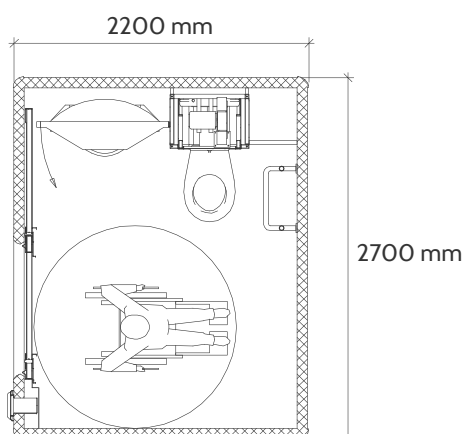
- ✓ Automatic sanitation system of toilet, floor and surfaces
- ✓ Reduced water consumption and maintenance costs
- ✓ Standard size 220 x 270 cm - h 280 cm
- ✓ Structure in reinforced concrete
- ✓ Structural and plant compliance

Features

1. Transparent dome for natural light
2. Insulation and bitumen roofing
3. Bearing roof in reinforced concrete
4. Painted ceiling
5. Painted frame
6. Exterior wall painted
7. Interior wall coated with ceramic tiles
8. Emergency and signal devices
9. Reinforced coin box
10. Semi-automatic sliding door in stainless steel
11. Infrared sensors for presence detection
12. Ribbed porcelain stoneware flooring
13. Fibreglass sink block
14. Ceramic WC

Customizations

- ☐ Wall insulation thickness 30 mm
- ☐ Exterior coating with tiles (in picture [6])
- ☐ Interior coating in fibreglass, tile effect
- ☐ Non-slip ribbed rubber flooring (in picture [12])
- ☐ Air conditioning
- ☐ Water jets for floor washing and objects removal
- ☐ Complete washing of the wall behind the WC
- ☐ Water dispenser for bidet
- ☐ Bad smells suction system
- ☐ Heated WC seat *
- ☐ WC in stainless steel *
- ☐ Underfloor sensors for presence detection
- ☐ Electric floor heating
- ☐ Presence detection with radar system



The prefab kiosk depicted is equipped with the SWING system, but is also compatible with NOBILE system.

*availability depends upon the installed system