



LINEA CITTÀ

AUTOMATIC URBAN TOILET

## REALE

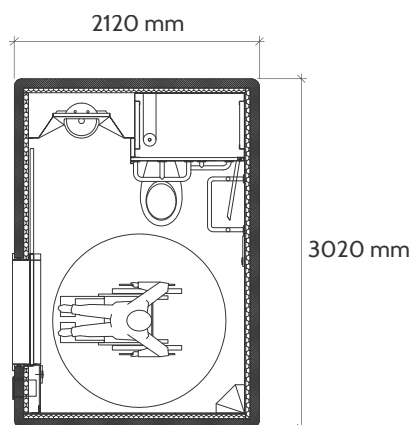
- ✓ Automatic sanitation system of toilet, floor and surfaces
- ✓ Reduced water consumption and maintenance costs
- ✓ Standard size 302 x 212 cm - h 290 cm
- ✓ Structure in reinforced concrete
- ✓ Structural and plant compliance

## Features

1. Transparent dome for natural light
2. Insulation and bitumen roofing
3. Bearing roof in reinforced concrete
4. Painted ceiling
5. Interior wall with ceramic tiles
6. Exterior wall painted
7. Emergency and signal devices
8. Reinforced coin box with interactive display
9. Automatic sliding door in stainless steel
10. Underfloor sensors for presence detection
11. Non-slip ribbed rubber flooring
12. Fibreglass sink block
13. Ceramic WC

## Customizations

- ☐ Insulated fibreglass roof (in picture [3])
- ☐ Wall insulation thickness 30 mm
- ☐ Interior coating in fibreglass tile effect
- ☐ Interior coating in stainless steel (in picture [5])
- ☐ Exterior coating in painted steel slats
- ☐ Exterior coating in coloured glass or mirror
- ☐ Exterior coating in wood slats
- ☐ Exterior coating in ceramic tiles (in picture [6])
- ☐ Air conditioning
- ☐ Electric floor heating
- ☐ Water jets for floor washing and objects removal
- ☐ Complete washing of the wall behind the WC
- ☐ Water dispenser for bidet
- ☐ Bad smells suction system
- ☐ Heated WC seat \*
- ☐ WC in stainless steel (in picture [13]) \*
- ☐ Presence detection with radar system



The prefab kiosk depicted is equipped with the TRIAX system, but is also compatible with NOBILE and SWING systems.

\*availability depends upon the installed system